

HELPING COMMUNITY TO
SAVE ENVIRONMENT



ULTRASONIC FLOW METER

EE-UFM-01

E2E Innovative Solutions Pvt. Ltd.

Unit No.615A, 6th Floor Block-A, The Arcadia South City-2, Gurgaon,
Haryana-122018, INDIA

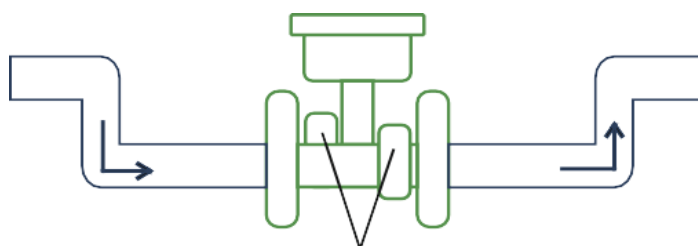
ULTRASONIC FLOWMETER

EE-UFM-01

E2E's Ultrasonic Flow Meters provide higher accuracy, greater range ability, advanced flow meter diagnostics, with no moving parts practically eliminating pressure loss common to other types of flow measurement devices. This advanced ultrasonic measurement technology can be applied to custody transfer, allocation measurement, check metering and leak detection.

Features

- It requires no calibration or regular cleaning, making it a cost effective and reliable solution.
- Helps detect any leakage in the process while metering the accurate flows of water supply for regulatory purposes.
- The online logbook offers convenient access to data storage in cloud.
- Easy installation minimizes setup time and effort.
- Provides a hygienic environment for measuring potable water as Transducers/sensors are mounted externally.
- Optimum control on your water resources.



Why Ultrasonic Flow Meter?

Description	Ultrasonic Flow Meter
Inbuilt telemetry	Optional
Accuracy	±2 %
Tamper proof	Yes
Maintainance	Low
Installation	Easy
Smart alerts	Yes
Online logbook	Yes

Key Features



IP68



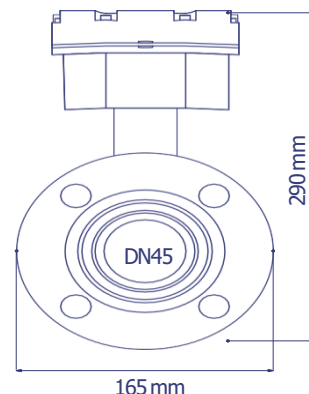
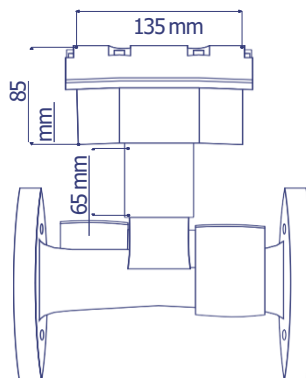
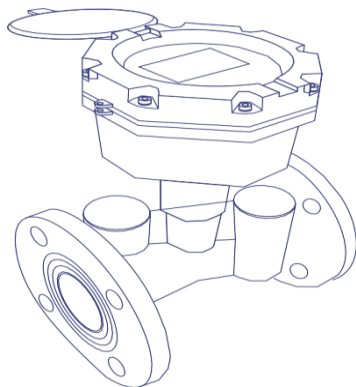
Battery operated
(Optional)



Inbuilt SIM
(Optional)



Smart register
(Optional)



Technical Specifications

Product ID	MD6	MD24	MD63	MD99	MD249	MD399
Make	E2E Innovative Solutions					
Model	EE-UFM-01					
Suitable pipe sizes	DN25	DN40, DN50	DN65, DN80, DN100	DN100	DN150	DN200
Minimum flow rate (m ³ /hr) (Q1)	0.1575	0.625	1.575	2.5	6.25	10
Maximum flow rate (m ³ /hr) (Q3)	6	24	63	99	249	399
Turndown ratio (R)	40					
Metering Technology	Ultrasonic transit time					
Power Source	12VDC / 2D Size Li Batteries (Optional)					
Battery Life	3-5 years as per the network availability (with 3 transmissions per day) (In case of inbuilt battery and telemetry system)					
Output	RS485 Modbus (In case of externally powered meter)					
Communication	Inbuilt SIM (4G/GPRS) (In case of in-built telemetry system)					
Display Parameters	LCD display with: flow direction, forward and reverse flow rate, cumulative forward flow, device ID					
Certification	ISO 4064: 2014					
Accuracy	As per ISO 4064, class 2					
Protection	IP68					
Materials	Cast Iron casing & ABS enclosure					
Data Transmission	Every 8hrs by default (In case of in-built telemetry system)					
Data Storage	Secured cloud (In case of in-built telemetry system)					
Data Access	Private access through mobile & web application (In case of in-built telemetry system)					

CONTACT US



+91-9911125172 / 9990319225



info@e2einnovative.com



www.e2einnovative.com



Unit No.615A, 6th Floor Block-A, The Arcadia South City-2, Gurgaon, Haryana-122018